

PRESS RELEASE

InnoTrans 2024: Vogelsang presents waste disposal solutions for passenger trains

- **BioUnit MID: new model for automatic waste disposal and cleaning of bioreactor toilets**
- **TUnit with foundation console: established solution for railroad treatment facilities**
- **VacUnit double pumping station for vacuum wastewater disposal**

Essen (Oldenburg), Germany, July 24, 2024 – At the [InnoTrans \(September 24-27, 2024 in Berlin\)](#), [Vogelsang GmbH & Co. KG](#) will be showcasing its service systems for hygienic wastewater disposal and drinking water supply in passenger trains. The focus at **booth 210 in hall 6.2** will be on the **BioUnit MID**, a new model in the BioUnit product range, which Vogelsang is expanding with two new units together with the BioUnit SMA. In addition to the BioUnit MID, the **TUnit with corresponding foundation console** and the **VacUnit double pump station** will also be on show at the booth.

“We will be presenting the BioUnit MID to a broad specialist audience for the first time at the InnoTrans,” says Michael Brinkmann, Managing Director of Vogelsang GmbH & Co. “By expanding the BioUnit family, we are creating solutions that are even more closely tailored to the needs of our customers. With the three models, SMA, MID, and BIG, we are offering the right disposal solution for every bioreactor train toilet and the existing service infrastructure.”

BioUnit series: hygienic disposal of wastewater from bioreactor toilets

The **BioUnit MID** and **BioUnit SMA** are suitable for the waste disposal and cleaning of bioreactor toilets. Both models consist of a stainless steel case and are mobile. In addition to a high-pressure pump with a pressure output of up to 200 bar, they are also equipped with flow and pressure sensors, quick-coupling connections, and a 10-inch color touch panel. Both versions can be used to extract wastewater from bioreactor toilets and to flush and clean the solids tank. The built-in rotary lobe pump in the **BioUnit MID** enables pressurized wastewater disposal from the toilets into a sewer or tank without an additional vacuum system. The **BioUnit SMA**, on the other hand, requires an external

vacuum system. If a rail depot already uses the TUnit, the smaller BioUnit SMA version is sufficient to clean the bioreactor toilets, for example. If no disposal infrastructure is available, the BioUnit MID is the suitable solution. The **BioUnit BIG** for the mechanical and chemical cleaning of bioreactors completes the BioUnit family.

TUnit with foundation console: proven system for railroad treatment facilities

Vogelsang will also be showcasing the **TUnit** for hygienic and service-friendly wastewater disposal and drinking water supply on trains. The suction and water hoses are suspended from a vertical support system on the TUnit. This design enables a large working radius of up to 7.5 meters in all directions and therefore uncomplicated and reliable filling and disposal. At the InnoTrans, the mechanical engineering company will be presenting the **TUnit MP** variant, a multiuser system for medium-sized and large rail depots. It is installed as a satellite service system, either directly at the service platform or in depots. A corresponding **foundation console** with vacuum dewatering will also be on display at the booth: the prefabricated mounting console with its integrated supply and disposal connections makes it quicker and easier to install the TUnit.

VacUnit for vacuum wastewater disposal

With the **VacUnit** double pumping station, Vogelsang will be presenting a reliable and compact solution for vacuum wastewater disposal. As a central pumping station, it provides the negative pressure required for wastewater transport in the connected vacuum control system. The closed system of the VacUnit makes it possible to convey both liquids and air in the same operation. The solution is resistant to foreign bodies and clogging. In addition, the VacUnit is characterized by its high availability and simple system design. The QuickService concept also enables fast maintenance.

For representatives of the press, we offer personal appointments at the Vogelsang exhibition booth. Please make an appointment by e-mail or phone:

- VOCATO public relations GmbH, Verena Schmorleiz,
Phone: +49 2234 60198-15, vschmorleiz@vocato.com

Vogelsang at the InnoTrans, September 24-27, 2024, Berlin: hall 6.2, booth 210

For more information, please visit: vogelsang.info

Press contact:

Vogelsang GmbH & Co. KG
Ralf Steiling
Marketing Manager Industry and Transportation
Holthoeye 10–14
49632 Essen (Oldenburg), Germany
Phone: +49 5434 83-231
Mail: ralf.steiling@vogelsang.info
Web: www.vogelsang.info

VOCATO public relations GmbH
Friederike Wagner /
Verena Schmorleiz
Toyota-Allee 29
50858 Cologne, Germany
Phone: +49 2234 60198-16/-15
fwagner@vocato.com / vschmorleiz@vocato.com
www.vocato.com

About Vogelsang:

Vogelsang GmbH & Co. KG, headquartered in Essen (Oldenburg) in Lower Saxony, develops, produces, and sells technically high-quality, individually configurable, service-friendly machines. Founded in 1929, the company grew from manufacturing agricultural machinery to specializing in machines and solutions in the wastewater, agricultural technology, biogas, industrial, and transportation technology segments. The innovative family-owned company currently employs over 1,300 people worldwide. As an internationally oriented mechanical engineering group, the company ensures the highest product quality through research, development, and production at its Essen location and other production facilities, both in Germany and abroad. With 30 subsidiaries and other representatives, Vogelsang is present in over 50 countries around the world. The company has already received several accolades from the economic research institute Prognos AG, including the award “Germany’s innovation leader.” Further information can be found online at: vogelsang.info

Images:

Image 1: The BioUnit MID is suitable for cleaning bioreactor toilets.



Image 2: The TUnit MP ensures hygienic and service-friendly wastewater disposal and drinking water supply for trains.



Image 3: The foundation console allows an easy installation of the TUnit.

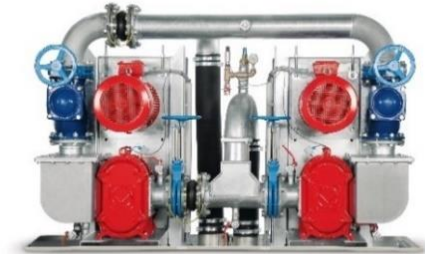


Image 4: The VacUnit double pumping station for vacuum wastewater disposal.

Image source for all images: Vogelsang GmbH & Co. KG